

PARAMOUNT BED

INSTRUCTION MANUAL

7C00007700A0

CA-A533

Foot spacer

Preface

Thank you for your purchase of foot spacer.

This instruction manual describes precautions and safety information for safe use of the foot spacer.

- Be sure to read these safety precautions beforehand to ensure proper usage.
In addition, before assembling this product, carefully read the instruction manual.
- Not only users of the foot spacer, but also caregivers should be instructed of proper and safe usage.
- After reading this instruction manual, store it in a place that can be easily accessed for later reference.
- If you have any questions, please contact the local sales agent or consult us directly.

Intended use

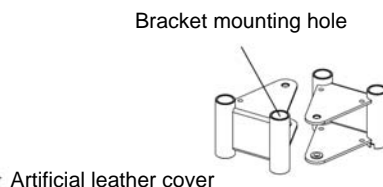
The foot spacer is included on CA-48A/49A Series beds for use with safety measured design which prevent patients from falling or sliding into the gap between the bed side rail and foot board. For safe use, please ensure that you thoroughly understand and follow the safety precautions in this manual and use the foot spacer properly in consideration of the patient condition.

Part names and part inspection

- After unpacking the parts, check each one to confirm that all are included and intact and not damaged. If there are any missing, incomplete, or damaged parts found, contact your local sales agent immediately.



Foot-side rail brackets
Foot-spacers x 2



The adapter for
foot spacers x 2



Bolts x 2
Gaskets x 2
Nuts x 2



Operation instruction
manual x 1

PARAMOUNT BED CO., LTD.

- The safety precautions described here are intended to ensure safe use of the product and prevent personal injury and property damage. Precautions are classified into one of three categories: Warning, Caution and Prohibited, depending on the degree of danger, type of hazard, and the damage or injury that could result from incorrect operation.
- These three icons accompany important safety information and instructions that must be followed carefully.



Warning

- Indicates actions that may result in death or serious injury if the indication is ignored.

- Do not use the foot spacer as a handrail or lean against it.
 - Injuries may be caused by the foot spacer becoming deformed or turning over.
- Be careful not to allow any part of the body (especially the head or neck) to enter the gap between the foot spacer, bed side rail or foot boards.
 - Doing so could cause the affected person's head or neck to get caught in the gap, causing injury.
- Please firmly and thoroughly insert the foot spacer into the mounting holes on the adapter.
 - If only half of the foot spacer is inserted, it could move or turn over, causing injury.
- The foot spacer can only be used while the bed side rail is in the up position.
 - The patient could fall off the bed, resulting in injury if the foot spacer is used while it is flipped down.



Caution

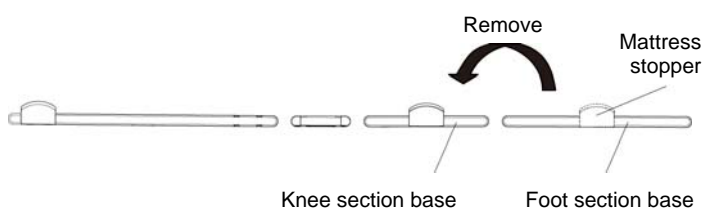
- Indicates actions that may result in light personal injury or property damage if the indication is ignored.

- Do not allow patients to get into or out of the bed while the foot spacer is installed.
 - The patient could fall over if caught on the foot spacer or its hardware.
- Keep the foot spacer covers away from fire and sharp objects.
 - The cover could get holes in it or become otherwise damaged. Stop use immediately if any holes form that are large enough to allow a hand or foot to enter and replace the cover before attempting to use the affected foot spacer again.
- Do not attempt to move the bed by grasping or holding onto the foot spacers and pushing.
 - The foot spacers could become deformed or otherwise damaged if a strong external force is applied to any foot spacer surface or part.
- Do not allow users to make any repairs or modification without permission.
 - Unauthorized attempts at repair and modification could cause unexpected damage to the foot spacers and other objects.



No Disassembling

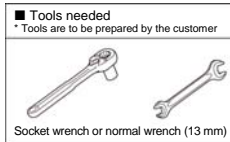
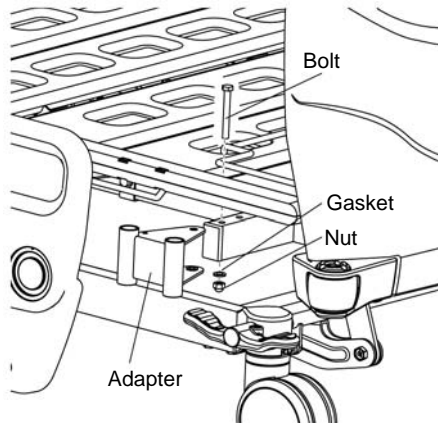
Attachment method



- (1) Remove the mattress stoppers installed at the foot end and attach one at each side of the knee section base.

* (For detailed attachment and removal instructions for the mattress stopper, see the instruction manual.)

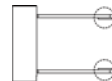
Attachment method



- (2) Please attach the adapter to the square tube under the foot section base of the bed body and tighten it down with the accompanying bolt.



- **The bolts are to be firmly tightened down.**
(Check to see if the the tightened adapter can rotate slowly.)
- **Check to ensure that the shaft sleeve is on the adapter during installation.**



- (3) Insert the foot spacer bracket rails into the mounting holes on the adapter positioned as shown in the figure.

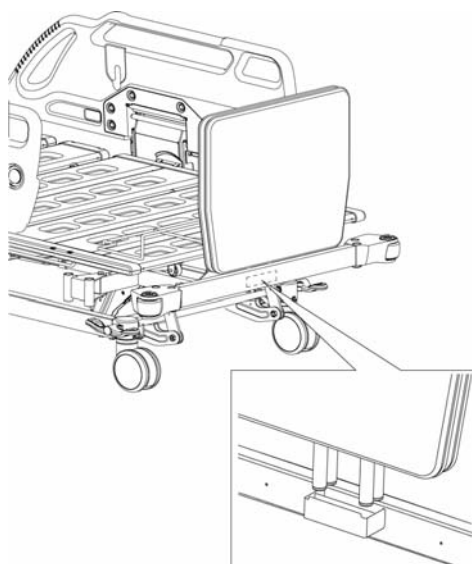
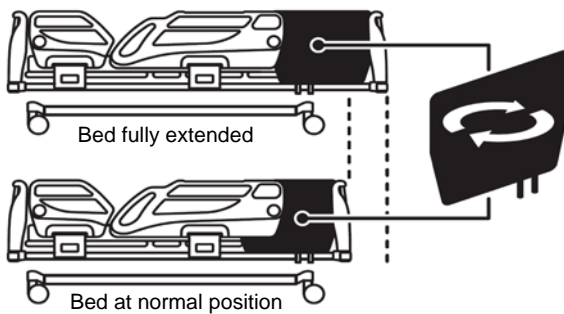
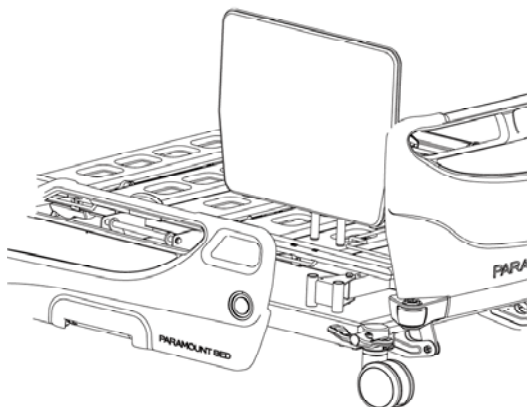
* To remove the foot spacer, complete the above steps in reverse order.



- **Insert the foot spacer firmly in place.**



- **The bed body comes with an extension frame attached. Users should pay attention to the installation orientation for the foot spacer and make changes as necessary depending on the position of the extension frame.**



- (4) Please insert the foot spacer rail brackets into the storage hardware fitting located between the foot board and foot section base to store the foot spacers.

Specifications

Model	Size (m m)	Product weight (kg)	Material		
			Cover	Core materials	Frame/Adapter
C A -A 533	550 × 545 × 17	Approx.2.6	Artificial leather	PU	Steel

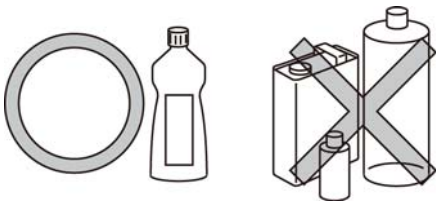
* Hardware of the foot spacer is not included in the size and product weight.

Maintenance/Long-term storage

- When cleaning the foot spacer, dip a cloth in a diluted solution of neutral detergent, then wring it out thoroughly and use it to wipe the foot spacer. Next, rinse the cloth in clean water, wring it out thoroughly again and use it to remove residual detergent. Finally, wipe it dry with a dry cloth.

* Do not use volatile substances (diluting agents, propellant and gasoline, etc.) as doing so is likely to cause discoloration and deterioration.

- Do not place the foot spacer under direct sunlight for storage if it is not to be used for an extended period of time.
- If using disinfectant, dilute it according to the following concentration before use.



0.05-0.2%	benzalkonium chloride
0.05-0.2%	benzethonium chloride
0.05%	chlorhexidine gluconate
0.05-0.2%	sodium hypochlorite



- Due to the different disinfectants, their use can corrode metal or damage resin parts, causing discoloring, deformation, cracking or other adverse effects. Thus, please use the above disinfectants.
- Carefully read the operating instructions for the disinfectant being used and confirm their composition before use.
- Please remove the disinfectant after disinfection.
- Ozone sterilizers or high pressure sterilizers are not applicable.

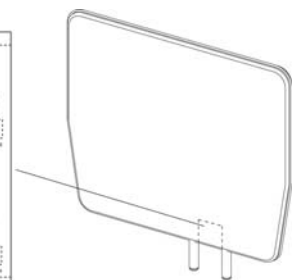
After-sales service

1. When requesting repairs

In case of problems, please contact your local sales agent.

■ Details that need to be provided when requesting repair:

- Product name and model number
- Manufacturing batch numbers marked on the product ID label
- Purchase date
- Description of problem or exception (in detail)
- Facility name, name, address and phone number



2. Parts replacement

We guarantee to provide any required replacement parts (necessary parts used to maintain the performance of the product) for the first six years after production of a product ends.

3. After-sales service

If you have any questions, feel free to contact your local sales agent.

PARAMOUNT BED

Global Business Division

14-5, 2-chome Higashisuna, Koto-ku, Tokyo 136-8670 Japan

Tel: +81 (0)3-3648-2961

Fax: +81 (0)3-3648-2420

7C00007700A0

2012-09