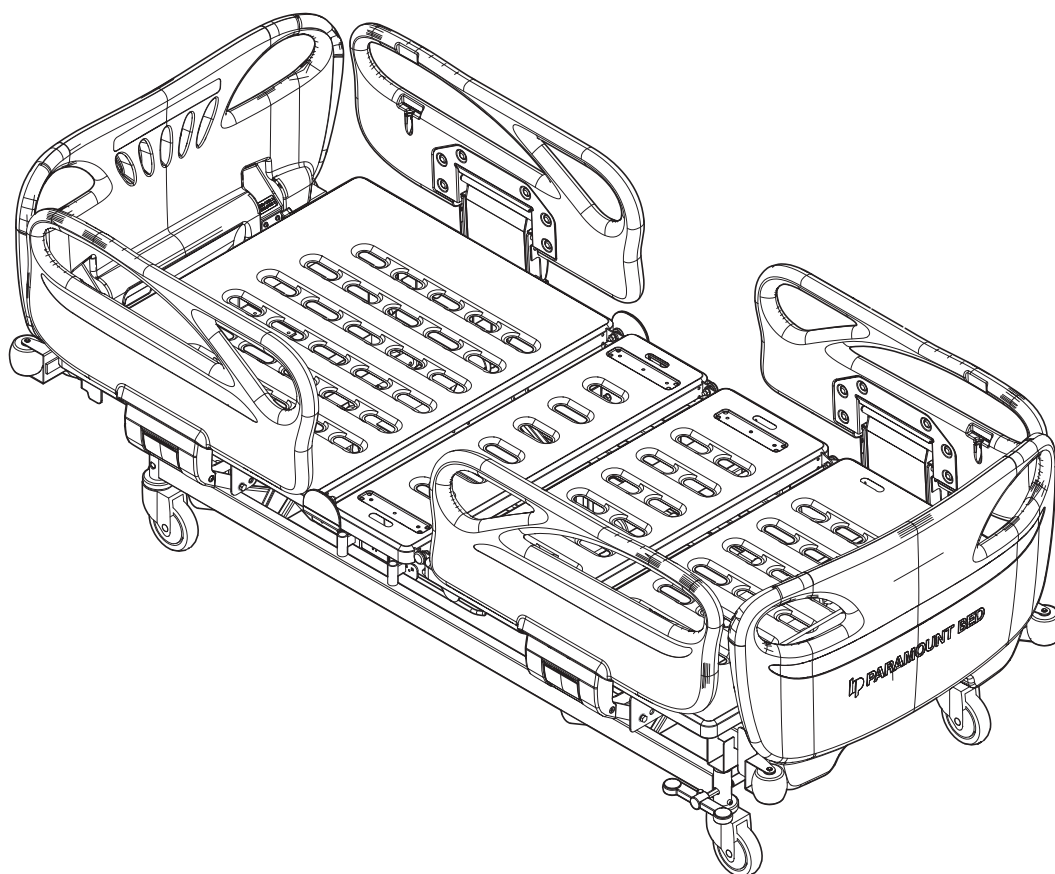


# Qualitas Beta Parts List

This parts list contains the parts that are required for repairing and maintain Qualitas Beta.

- Please note that the listed parts are the smallest unit that can be provided
- Please read the instruction manual to double check the parts name and parts number
- Due to improvement of the product, parts of this list may differ slightly from product purchased
- For any queries, please feel free to contact your dealer



PARAMOUNT BED CO., LTD.

## Contents

<b>1. Qualitas Beta</b>	<b>3-4</b>
<b>2. Main Frame1</b>	<b>5-6</b>
<b>3. Main Frame2</b>	<b>7-8</b>
<b>4. Bottom Section AS</b>	<b>9-10</b>
<b>5. Bottom Section AS (X-ray)</b>	<b>11-12</b>
<b>6. Base Frame AS</b>	<b>13-14</b>
<b>7. Board AS</b>	<b>15-16</b>

## How to use parts list

- The color or dimension difference do not reflect on the diagrams. Please check the parts table for the correct unit color and size.
- Each part is numbered. The number in picture and the number in chart corresponds to each other.
- Be sure to inform us the parts number for parts inquiry.

## When ordering repair parts

- Each parts will be ordered by unit of one.
- When ordering, please inform us the parts number, product ID label images and quantity required.
- For any queries, please feel free to contact your dealer

## Repair during the warranty period

While most repairs are carried out free of charge as specified in the warranty sheet, some types of repairs are carried out at the user' s expense even during the warranty period.

For any queries, please feel free to contact your dealer

## After the warranty

When problems can be solved by repairs, they can be carried out at the user' s expense.

## Minimum part availability period

Paramount Bed will stock bed replacement parts for repair (needed to maintain product performance) for at least 6 years after production has been discontinued.

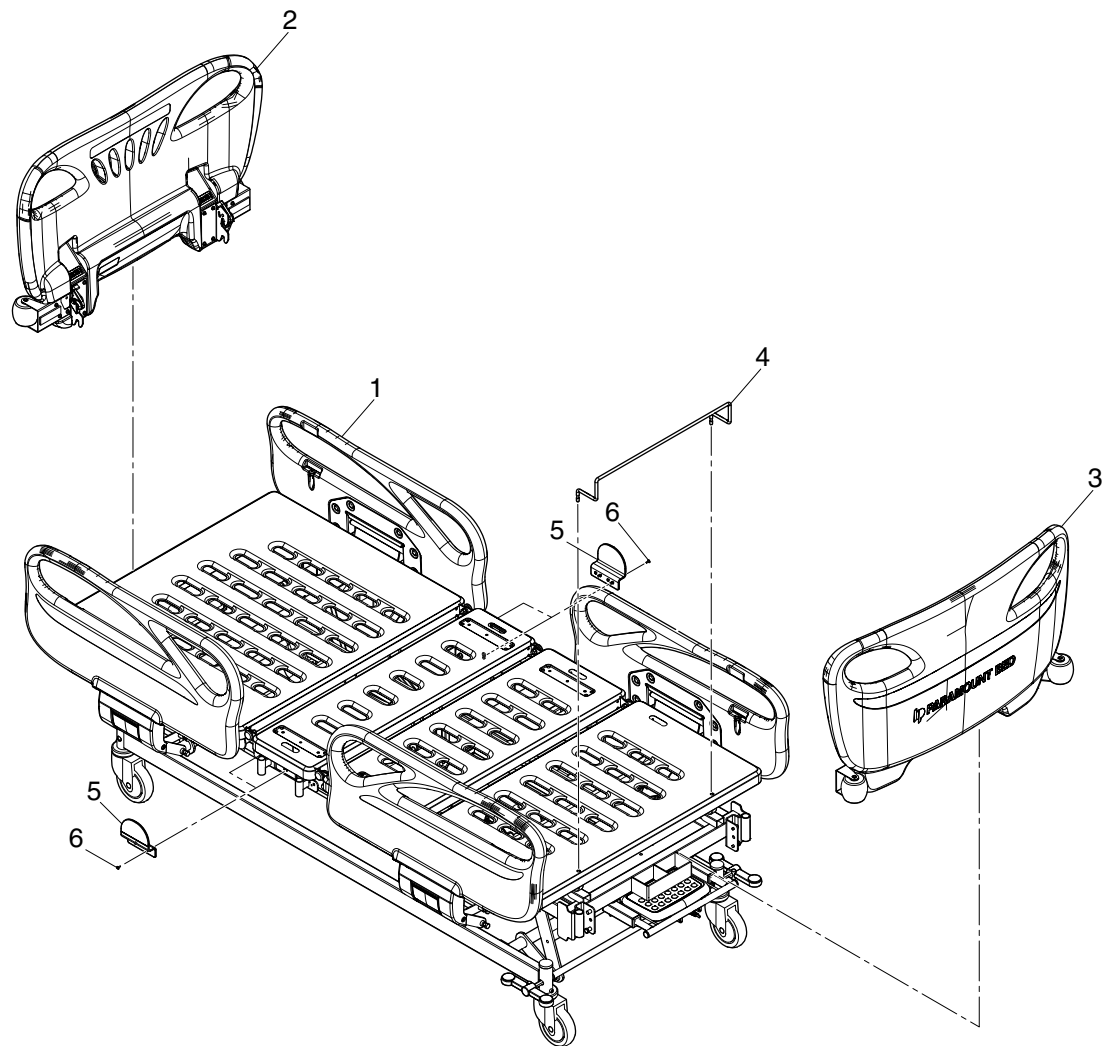
## Caution

- For user' s convenience, Paramount Bed try to provide the parts in details as much as possible. However due to safety and quality aspect and efficiency for delivery, some parts may be delivered in assembled form.
- Paramount Bed try to deliver the replacement parts quickly after your order, but sometimes it might take a time for delivery due to distribution conditions. Please check the delivery time when ordering.
- When you replace the parts, Paramount Bed recommend to replace fixing parts together with the replacing parts. (some parts are not suitable for reuse.)
- When replacing the parts, please make sure they are fixed by the screws, bolt and nuts.



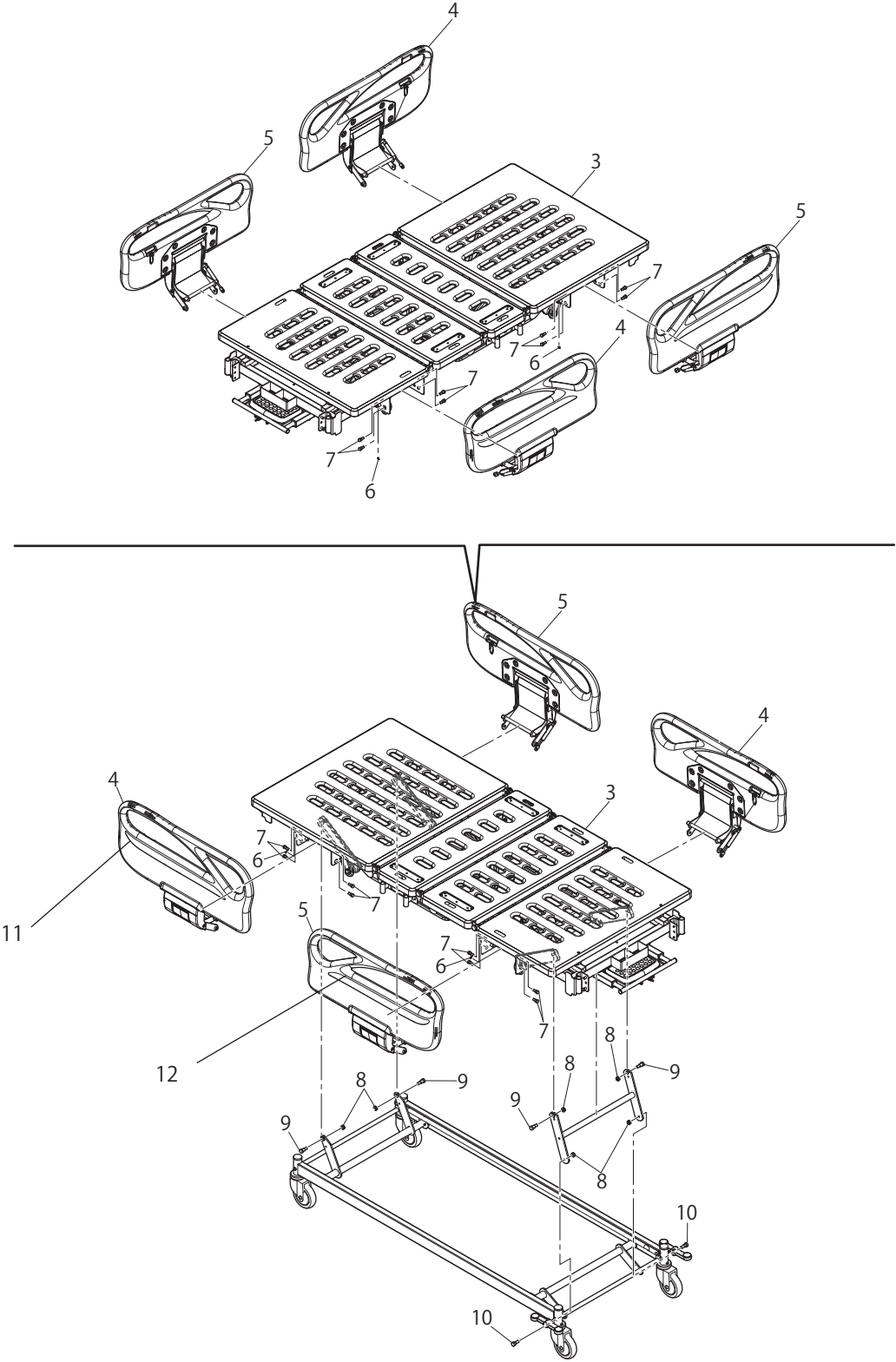
### Caution

- When fixing, please do not apply too much pressure on the screws and bolts. Too much tightening may cause deformation or damage.
- Be careful handling snap-pin may pop out in unexpected direction and cause an injury.



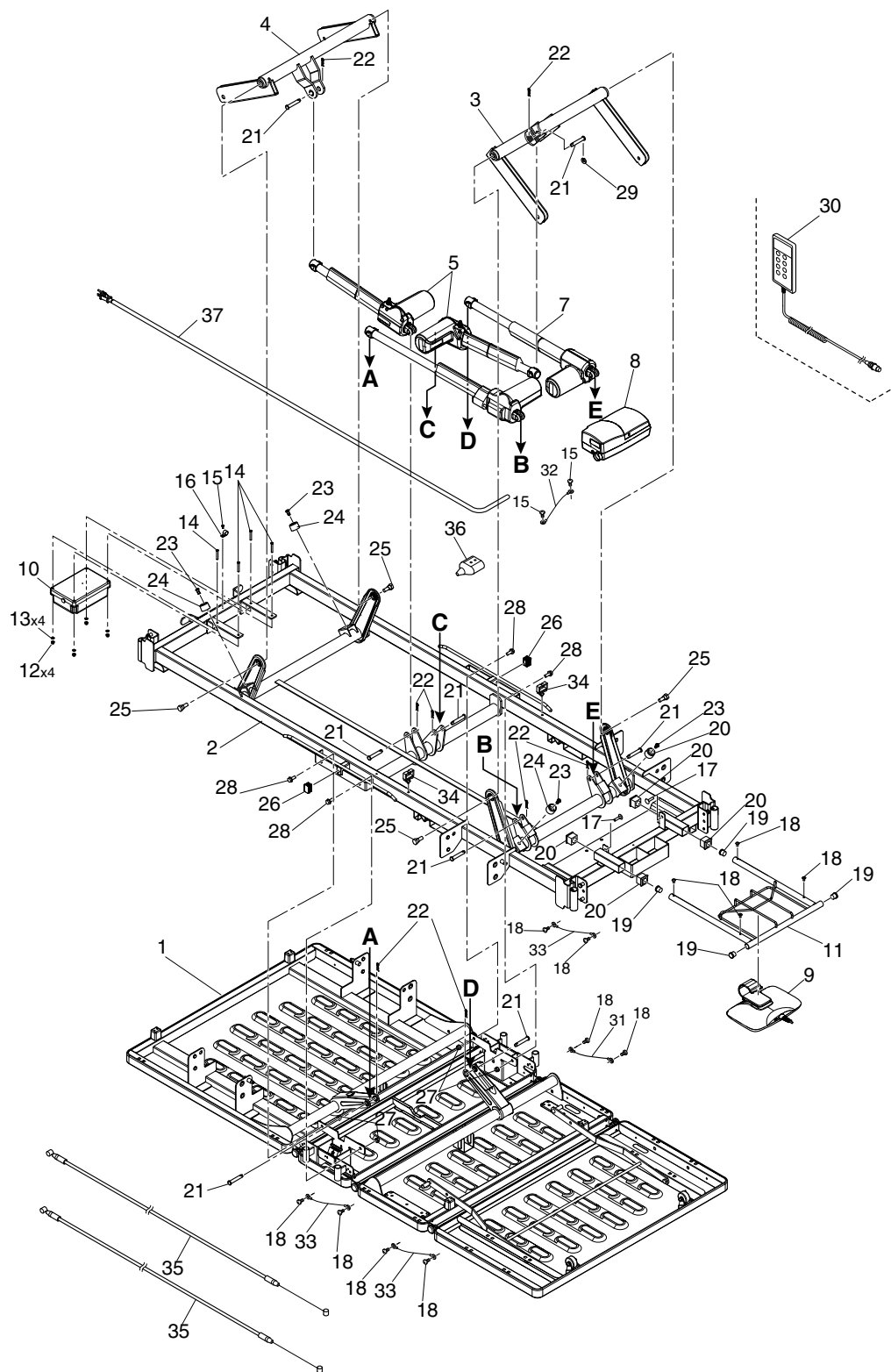
No.	Product code	Product name	Qty
1	-	4 Motor Bed	1
2	3A50004300A	Head Board AS	1
	3A50008300A		
	3A50007900A		
3	3A50004400A	Foot Board AS	1
	3A50008400A		
	3A50008500A		
4	ST673	Mattress Stopper	1
	PA507S0		
5	3A10013500A	Angle Indicator	2
6	000323804010	Truss Head 3T4x10	2

# Main Frame AS 1



No.	Product code	Product name	Qty
1	3A10008500A	Base Frame AS	1
	3A10008200A		
2	3F06765000A	Moving Link AS	1
3	3A10008100A	Main Frame AS	1
	3A10035300A		
4	3C01115801A	Side Rail Plastic Right AS	2
5	3C01115802A	Side Rail Plastic Left AS	2
6	003100S06000	ETW 6	4
7	3F00015000C	Shoulder Bolt B8M8	16
8	001010M10000	UN10	6
9	3F00015100D	Shoulder B14M10	4
10	3K01013100C	Link Bolt	2
11	3A40000101A	Siderail Label Right	2
	3A40000101B		
	3A40000101C		
12	3A40000102A	Siderail Label Left	2
	3A40000102B		
	3A40000102C		

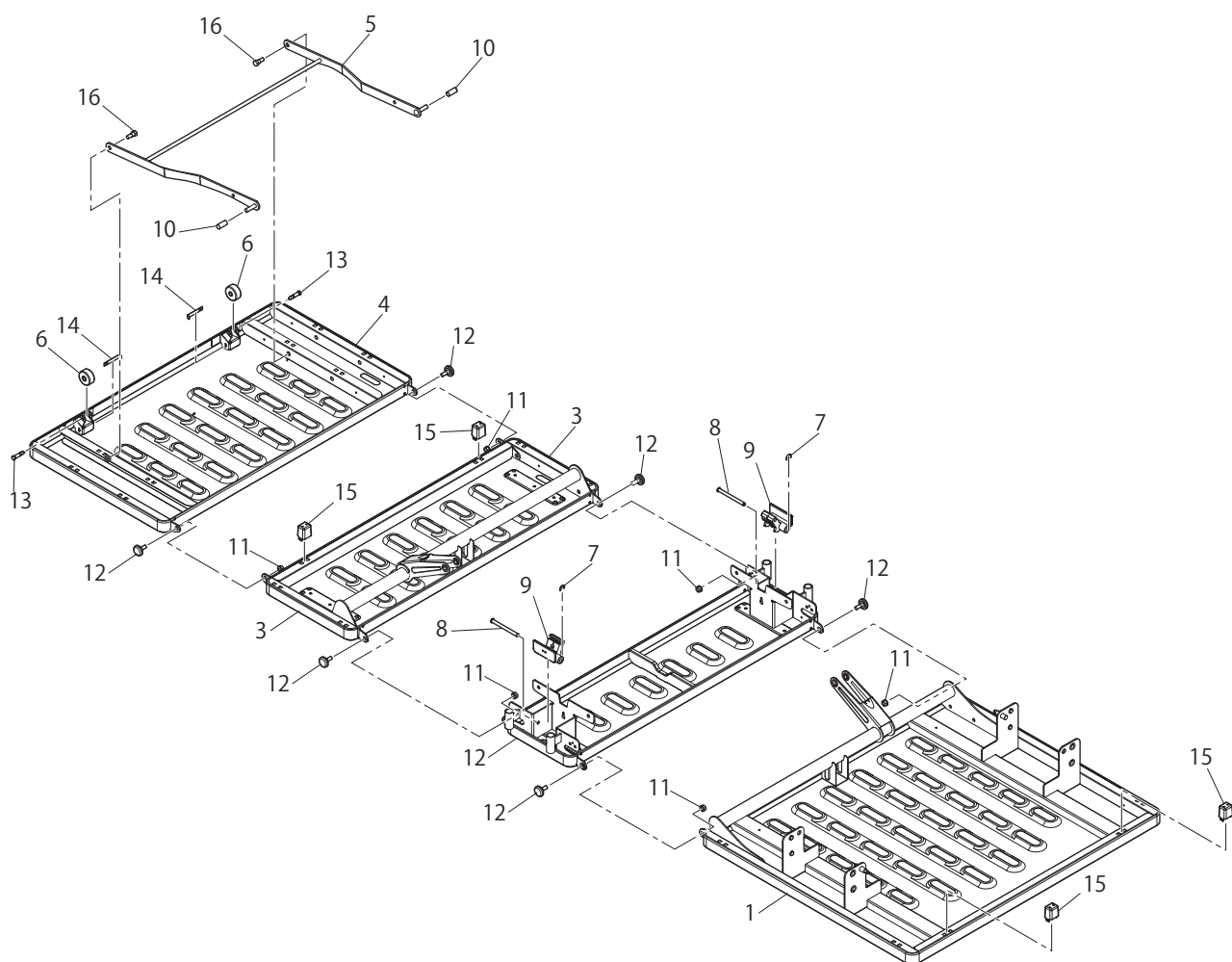
## Main Frame AS 2





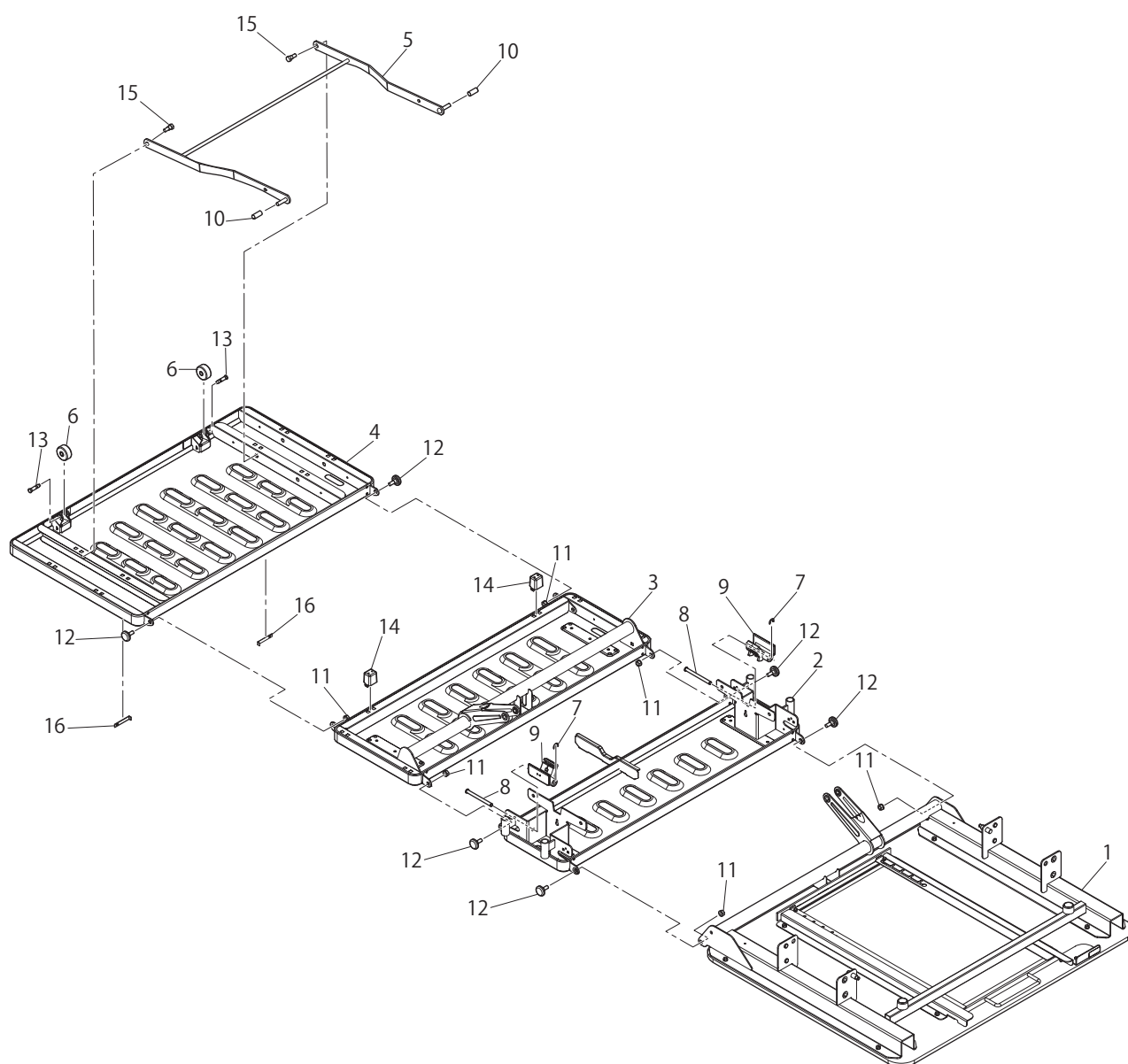
No.	Product code	Product name	Qty
1	3A10000400A	Bottom Section AS	1
	3A10035600A	Bottom Section AS with cassette holder	
2	3A10005900A	Main Frame AS	1
3	3A10009500A	Foot Side HL Link AS	1
4	3A10009600A	Head Side HL Link AS	1
5	TA10000400A	HL Actuator	2
6	TA10000700A	Actuator For Backraise	1
7	TA10000800A	Actuator For Kneerise	1
8	TC10000200A	Control Box	1
	TC10000500A		
9	TNP1000100A	Nurse Control Panel	1
10	TBB0000100A	Battery Unit	1
11	3A10007500A	NCP Receiver AS	1
12	001013305000	N5 With Spring Washer	4
13	3A00004200A	O-Ring	4
14	3A00003800A	Bolt M5x35	4
15	000323804010	Truss Head 3T4x10	2
16	100120000007	Code Clip 4N	1
17	101000000026	XT Clip 7S	2
18	000313M05010	Truss Head 2T5x10	12
19	210002000002	Cap 19	4
20	3A10020500A	Cap 30x30	4
21	3K01165400C	Connection Pin	8
22	004200810000	RP 10	8
23	101011000002	Bush R8	4
24	3F01437100A	Resin Washer Faced	4
25	3K01013100C	Link Bolt	4
26	3F00786800A	Cap	2
27	001013808000	Nut N8 With Spring Washer	4
28	3F00083500D	B8x20F	4
29	3K01804400A	Resin Washer	1
30	TH20000300A	Hand Controller SW	1
31	3A10035000A	Cable Earth 250	1
32	3A10034800A	Cable Earth 200	2
33	3A10034900A	Cable Earth 300	2
34	100111000001	Clip 15×7C	2
35	TW000000100A	CPR Wire	2
36	TYC0000100A	Extension Cable	1
37	TAC0000200A	AC Power Supply Cable	1

## Bottom Section AS



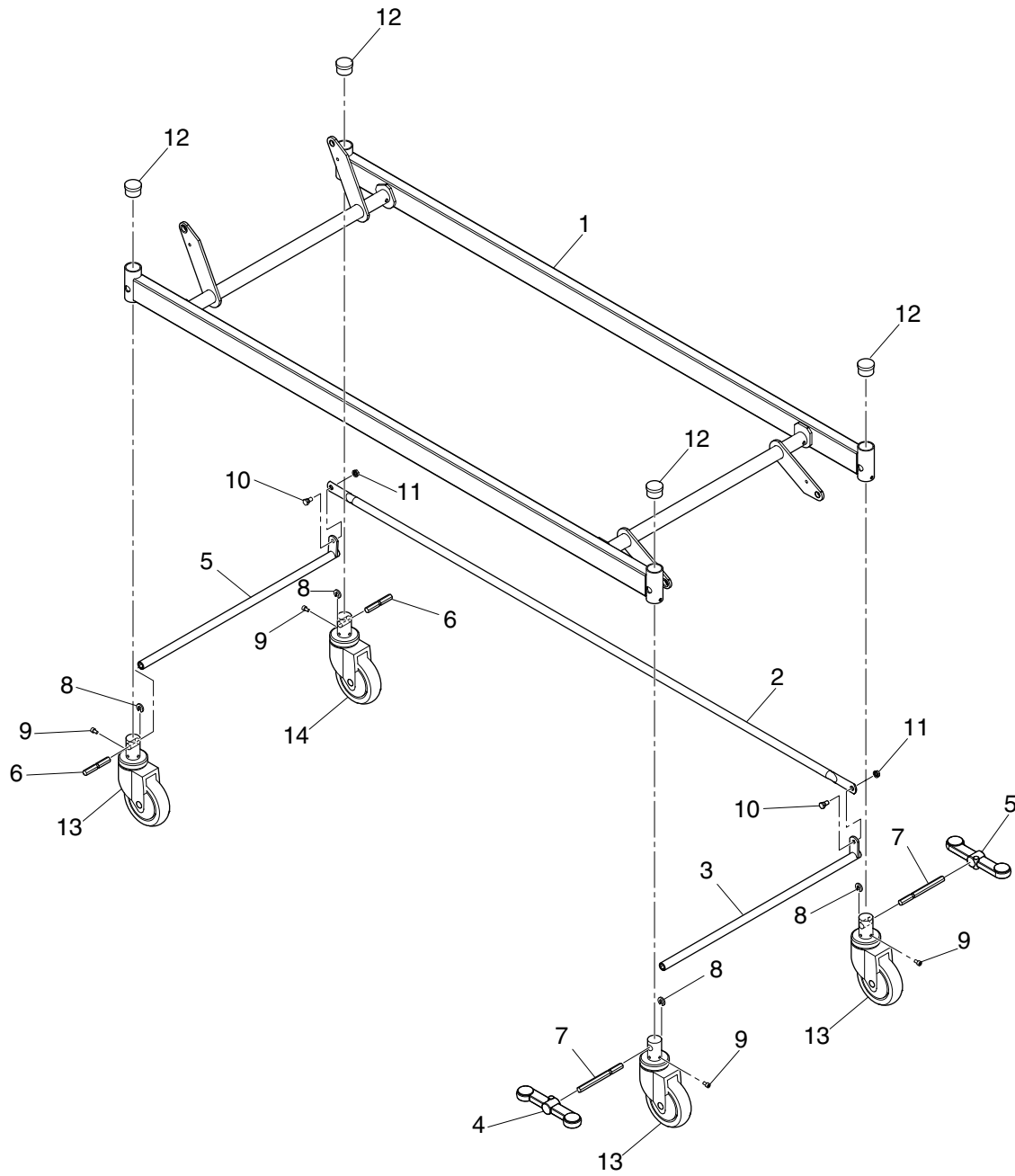
No.	Product code	Product name	Qty
1	3A10000500A	Back Section Base AS	1
2	3A10001300A	Hip Section Base AS	1
3	3A10001800A	Knee Section Base AS	1
4	3A10001900A	Leg Section Base AS	1
5	3A10002200A	Leg Section Base Stay AS	1
6	3F00013400D	Wheel Grey	2
7	003100S06000	ETW6	2
8	3K01181300A	Lever Pin for CPR	2
9	3K01186700A	CPR Lever	2
10	3F01940100A	Rod Cap	2
11	001013808000	Nut N8 With Spring Washer	6
12	3K00838000B	Cup Square Neck Bolt	6
13	3F00013500A	Axle	2
14	3F00013600B	Mattress Stopper Spring	2
15	3F03168000A	Bottom Receiver	4
16	3F00015000C	Shoulder Bolt 8M8	2

## Bottom Section AS (X-ray)



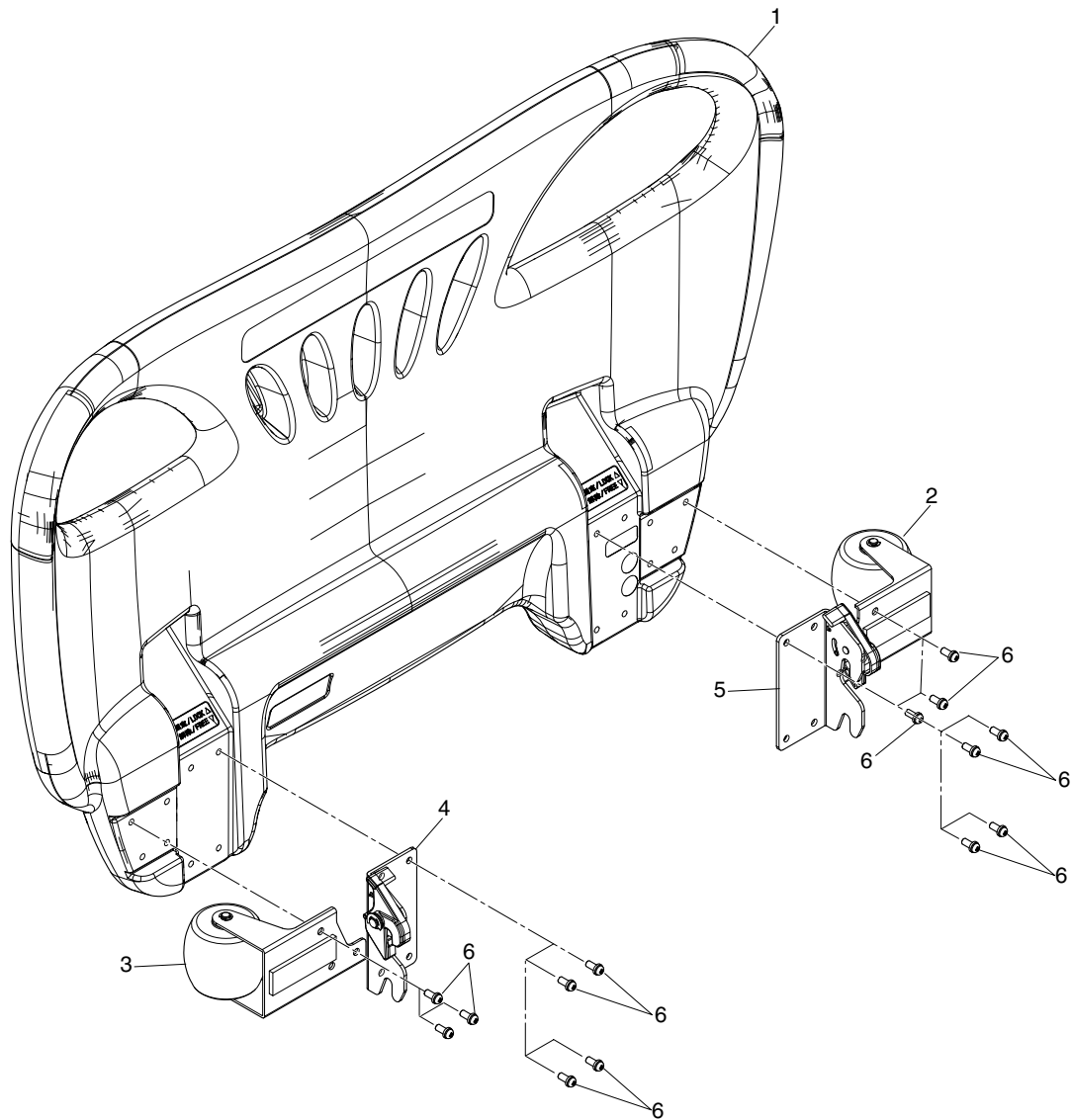
No.	Product code	Product name	Qty
1	3A10035700A	Back Section Base AS	1
2	3A10001300A	Hip Section Base AS	1
3	3A10001800A	Knee Section Base AS	1
4	3A10001900A	Leg Section Base AS	1
5	3A10002200A	Leg Section Base Stay AS	1
6	3F00013400D	Wheel Grey	2
7	003100S06000	ETW 6	2
8	3K01181300A	Lever Pin for CPR	2
9	3K01186700A	CPR Lever	2
10	3F01940100A	Rod Cap	2
11	001013808000	Nut N8 With Spring Washer	6
12	3K00838000B	Cup Square Neck Bolt	6
13	3F00013500A	Axle	2
14	3F03168000A	Bottom Receiver	2
15	3F00015000C	Shoulder Bolt 8M8	2
16	3F00013600B	Mattress Stopper Spring	2

## Base Frame



No.	Product code	Product name	Qty
1	3A10008200A	Base Frame AS 4M	1
2	3A10005400A	TL Linking Pipe	1
3	3A10005500A	TL Left and Right Linking Pipe AS	2
4	3F06824100A	Caster Pedal Right AS	1
5	3F06824000A	Caster Pedal Left AS	1
6	3F06262000A	Cam Shaft S	2
7	3F06261900A	Cam Shaft	2
8	3K01804400A	Resin Washer	4
9	3K01485100A	Bolt 6x10	4
10	3K01826400A	Shoulder Bolt 5M8	2
11	001019M08000	Thin nut N8 with spring washer	2
12	210005000005	Driving Cap 38	4
13	T125LNS	Caster	3
14	T125LMS	Caster	1
	T125LMSX		

## Board AS





No.	Product code	Product name	Qty
1	3C01082000A	Panel Board	1
2	3A50007201A	Bumper Receiver Right AS	1
3	3A50007202A	Bumper Receiver Left AS	1
4	3A50007401B	Board Stopper Right AS	1
5	3A50007402B	Board Stopper Left AS	1
6	000111206012	Pan Head Screw B6x12S	14

