

## PEDIATRIC SUPPORT *for Sonolith® table range*

### Description

This pediatric support kit has been validated for Sonolith® tables (ESWL-Praktis, ESWL-i-move, Endo-Praktis and Karbon). It includes:

- a transparent rigid support made of Polymethyl Methacrylate (same as Plexiglas™)
- A blue cushion for patient comfort
- Metal Supports
- Specific straps to lock the support on the i-sys table

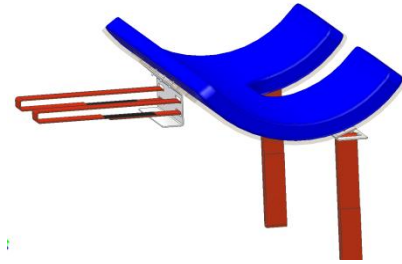


Figure 1 - Technical drawing

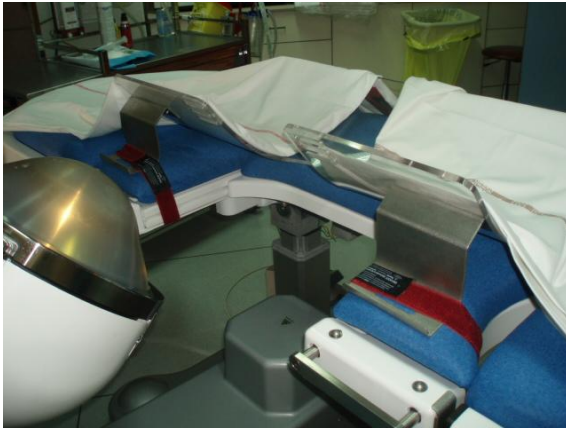


Figure 2 - Setup of pediatric support (cushion missing)

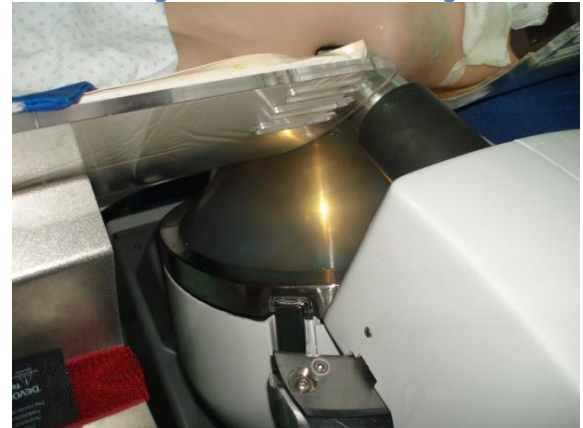


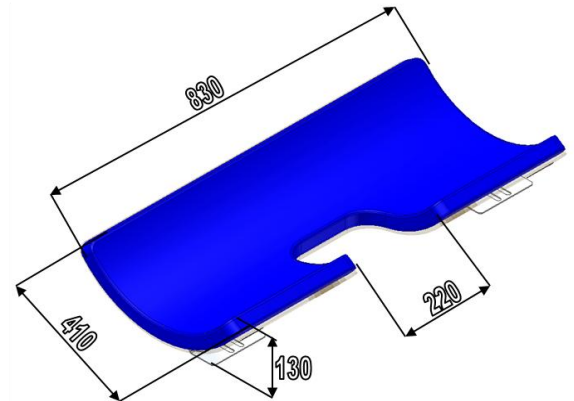
Figure 3 - Pediatric Support in use (cushion missing)

### Specifications<sup>1</sup>

Max. admissible patient weight: 40kg  
 Weight of pediatric kit: approx. 5.5 kg  
 Total weight with packing: approx. 8 kg  
 Dimensions: 830 x 410 x 130 (LxWxH in mm)  
 Aperture width: 220 mm

#### Raw Materials

- Main rigid support : PMMA
- Patient cushion fabric: Cotton PVC bounded
- cushion foam: PU
- Strap belts: Polyester coated tape material
- Brackets: Stainless Steel



### Certification

**Made in France by EDAP-TMS France S.A.**

**This product is marked CE-0459.**

Not currently available for the USA market. Not yet registered for the Canadian Market. For other countries than EU, consult local regulations and Laws.

### Pricing

Ref.	Description	End-User Price
230270	Pediatric Support	2 500 €

See complete updated price list for more details

<sup>1</sup> All specifications are subject to change without notice