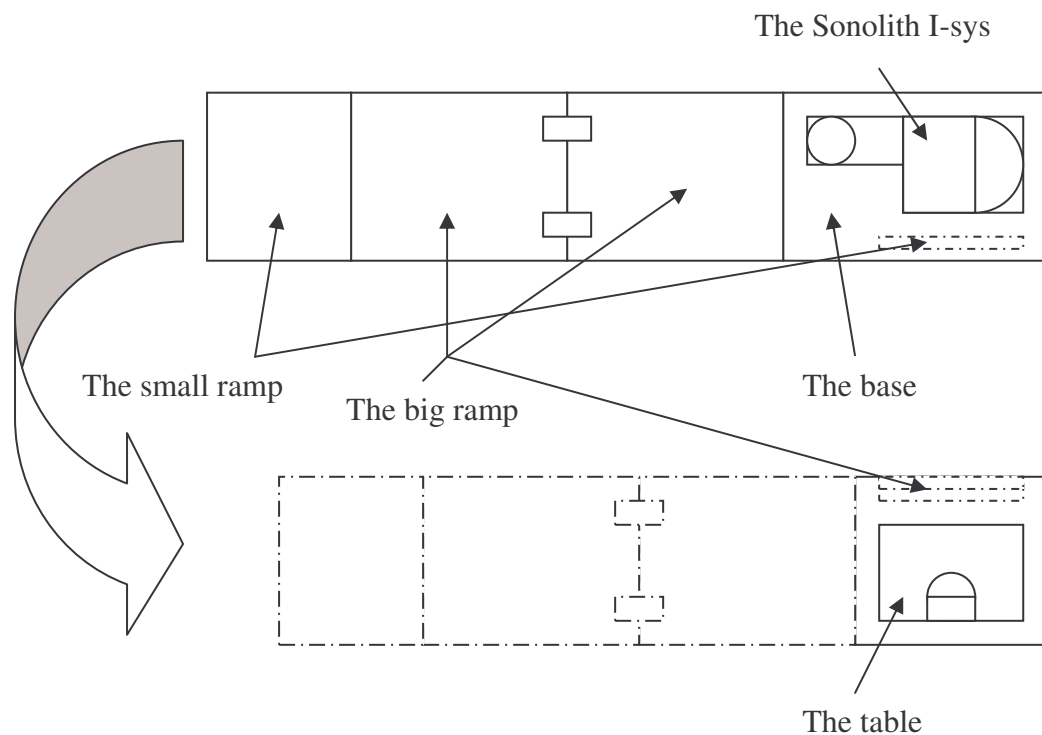


How to unpackaged the Sonolith I-sys

You need a large area for this work.

Remove the covers of the two crates

Refer to the drawing below



- 1) First uncrate the table in order to use the ramp which is placed next to the table.
- 2) Secondly open the Sonolith I-sys crate to remove the small ramp.
- 3) Place the two ramps as shown in the drawing in order to move down the module and the table (see on the picture too).

Be careful, because the module weighs 950 kilos and the table 250 kilos.

Normally, there are two screens next to the table and the image intensifier next to the module.

- 4) For the table, there are two brakes (see the attached picture) and two belts.

- 5) For the module, there are four screws and an amount of wood to unscrew (see the attached picture).

1) The big ramp



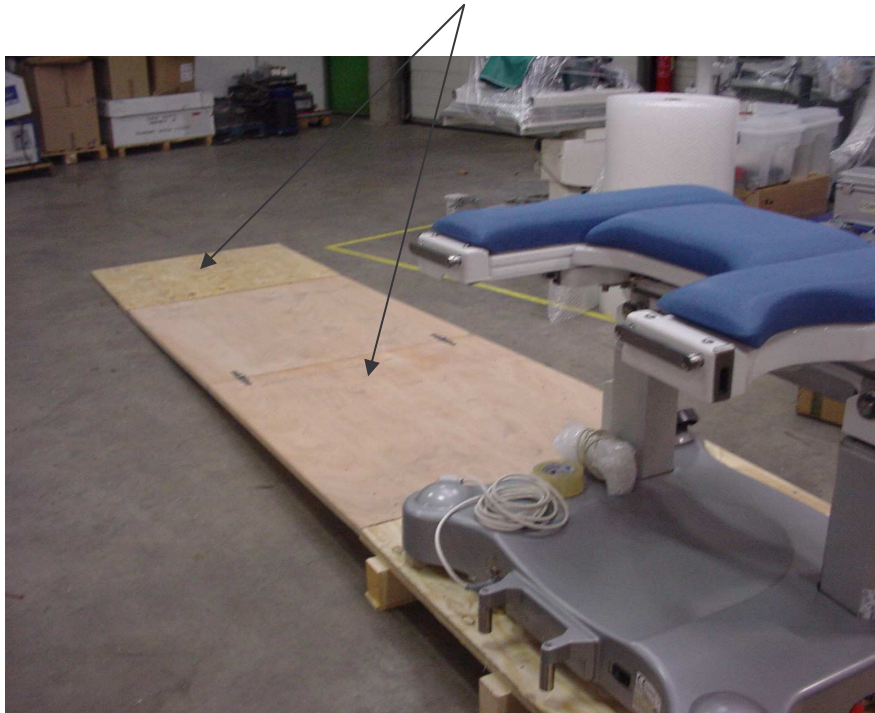
4) The two belts

4) The two brakes

2) The small ramp



3) The position of the two ramps



5) Four screws and hooks

Amount of wood



5) Screws