



TECHNICAL NOTE 47

FIBROSCAN 530C CHASSIS

ENHANCEMENT

Table of contents

1. GENERAL INFORMATION	2
2. ACRONYM	2
3. FACTS	3

1. GENERAL INFORMATION

Please note that only trained and ECHOSSENS certified service engineers are authorized to open and troubleshoot FibroScan as taught in this document.

Explanations of FS530C inner electronic and parts disassembly can be found on E320M003_2_TechnicalmanualFibroScan530 distributed at the end of ECHOSSENS service trainings.

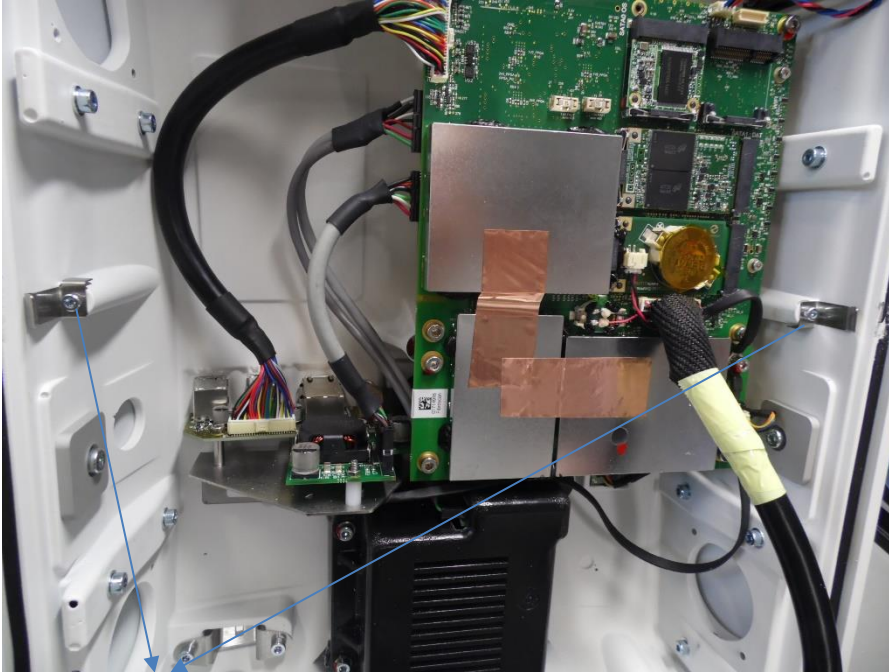
2. ACRONYM

The following abbreviations are used in the document:

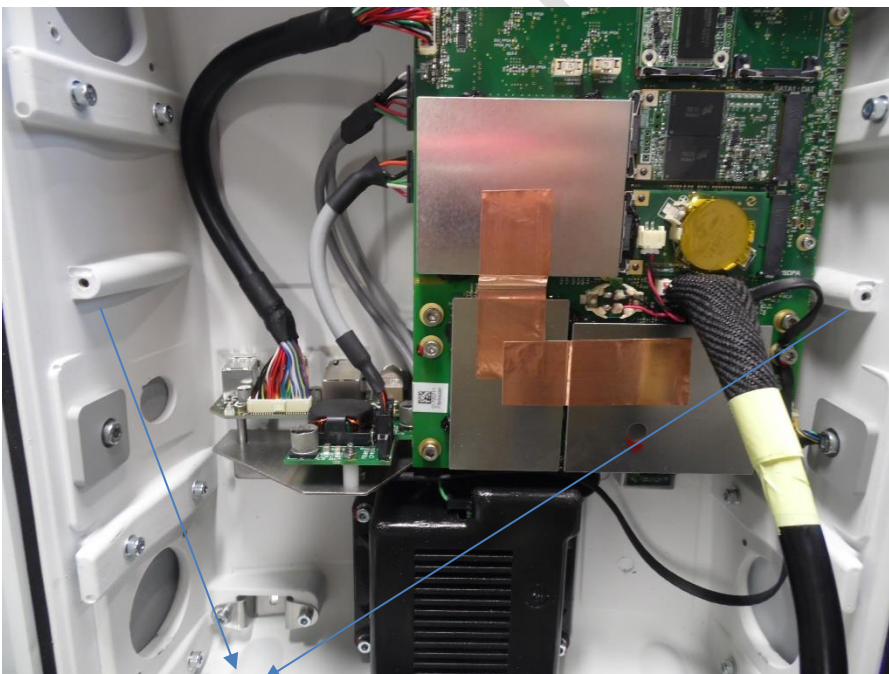
- ✓ FS530C stands for FibroScan 530 Compact.
- ✓ S/N stands for FibroScan serial number.
- ✓ PCB stands for electronic printed circuit board.

3. FACTS

As some Fibroscan 530C Coverglass PCB removal can be difficult to disassemble it has been decided in production to remove the chassis cleats (starting F80599 produced in August 2017).

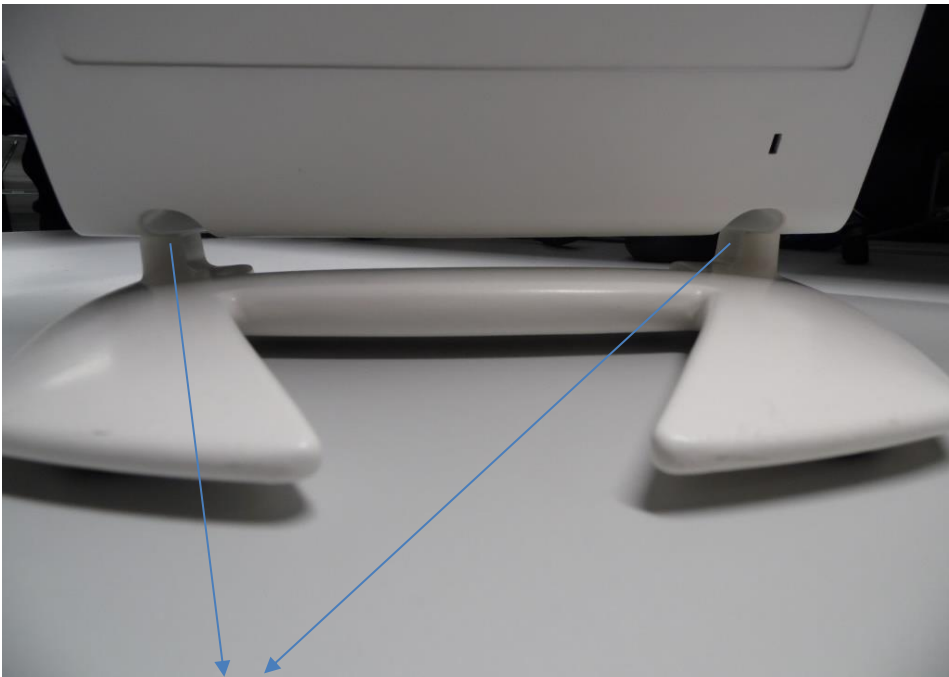


FS530C including cleats

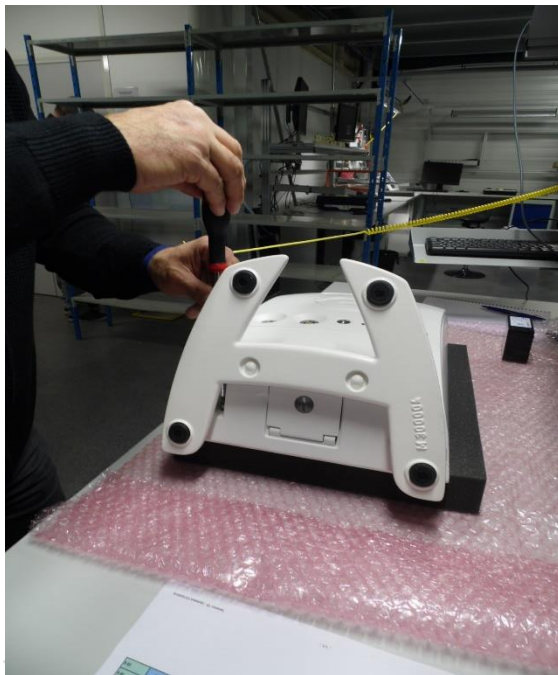


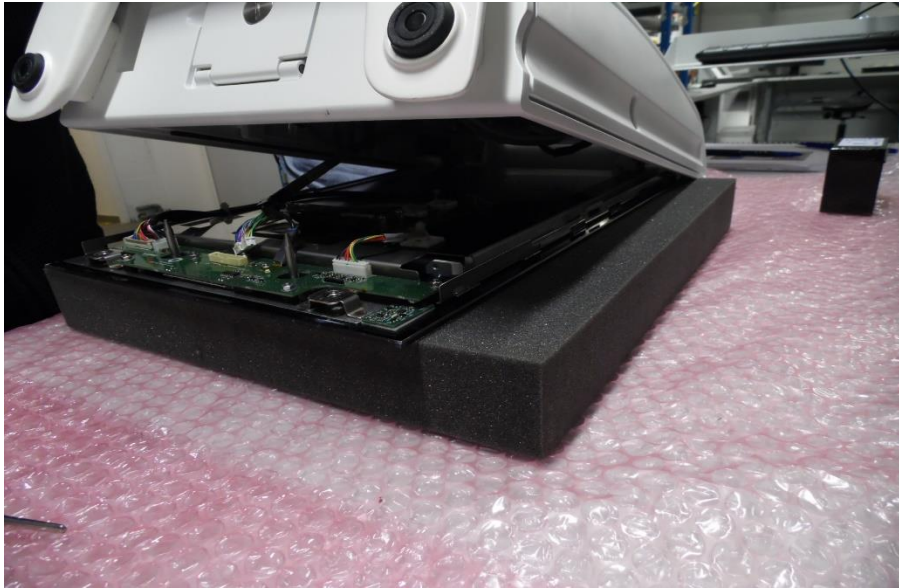
FS530C excluding cleats

The purpose of the cleats was to hold the Coverglass onto the chassis assembly in case the 2 outer screws were removed, as a consequence if one remove the 2 outer screws without laying the coverglass PCB horizontally on a piece of foam he might break it. This procedure being already described in E320M003_2_TechnicalmanualFibroScan530 there is no change in the service methods just a reminder.



Outer screws holding the
coverglass to the chassis





Correct way of dismantling
FS530C .

If during a service call the uncoupling of the coverglass from the chassis is difficult even with the recommended vacuum pum please advise service@echosens.com they will revert with solutions.