

# TECHNICAL NOTE 27

## FIBROSCAN 530 TOUCHSENSOR

### ADJUSTMENT

Written by Olivier Boschat

#### 0. IN WHICH CASE YOU NEED TO USE THIS PROCEDURE:

It can be noticed on FibroScan 530 manufactured before June 2016 (F80081) that part A supposed to attach LCD coverglass M300001 to the frame is not deep enough( image 1) .

As a consequence the outer cover screw (see E320M003\_2\_TechnicalmanualFibroScan530.docx for assembly details) will pull the metallic frame of the CoverGlass away from the glass and the glue between the frame and the glass might fail; Of this fact, the contact between the HMI board and the Touchscreen PCB (both included in HMI M300017) will become uncertain (image 2) hence the device not turning on/off or turning on/off on its own.

IMAGE 1

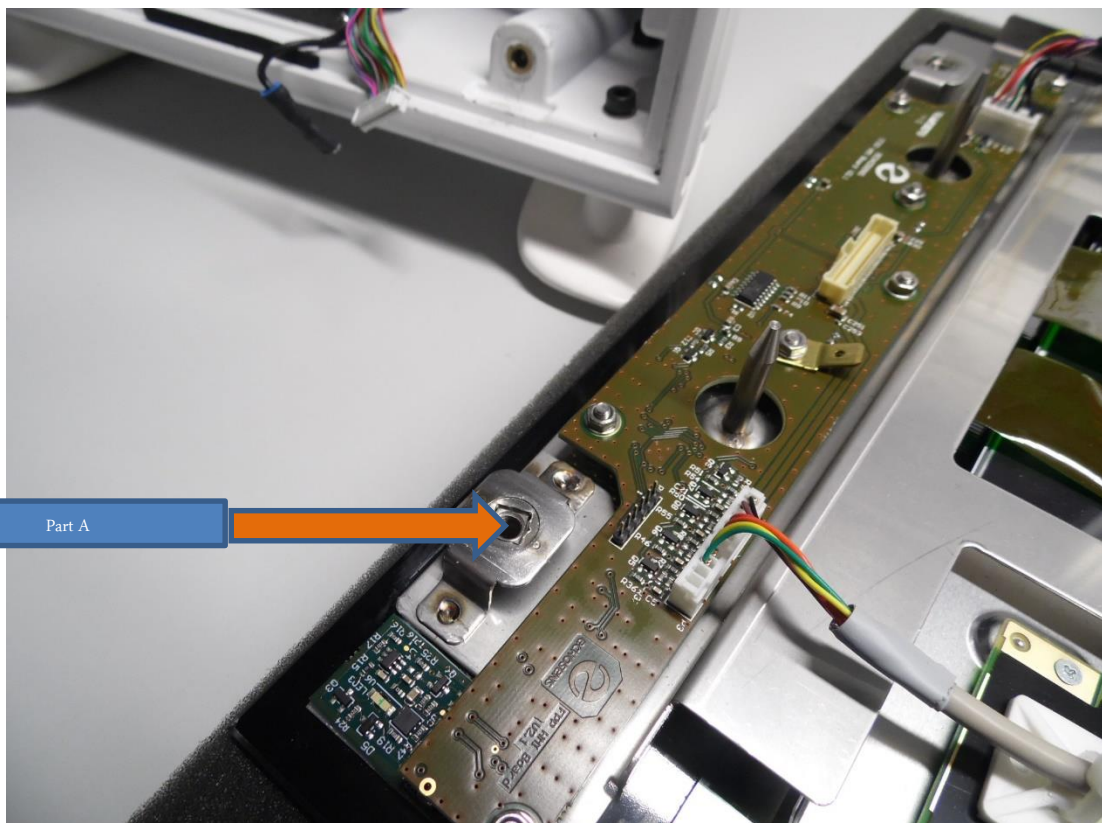
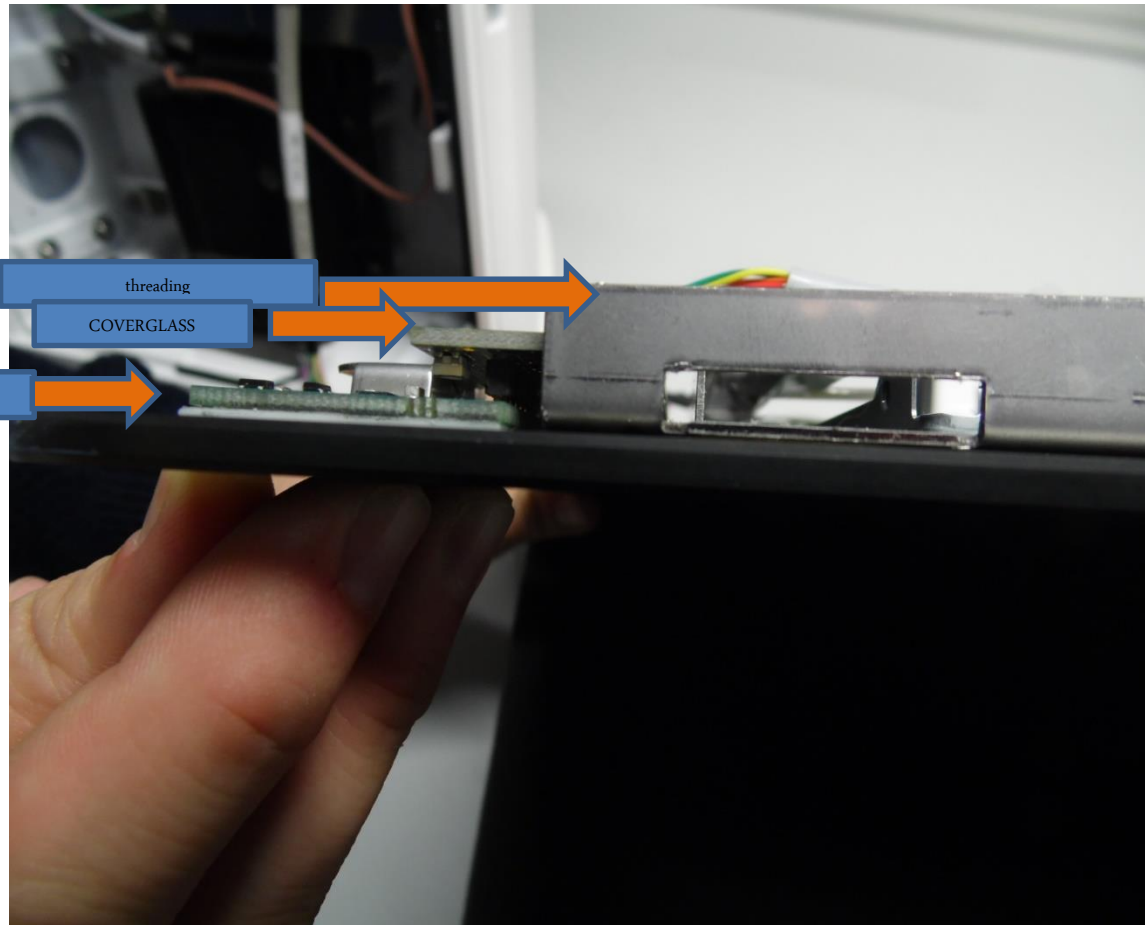


IMAGE 2

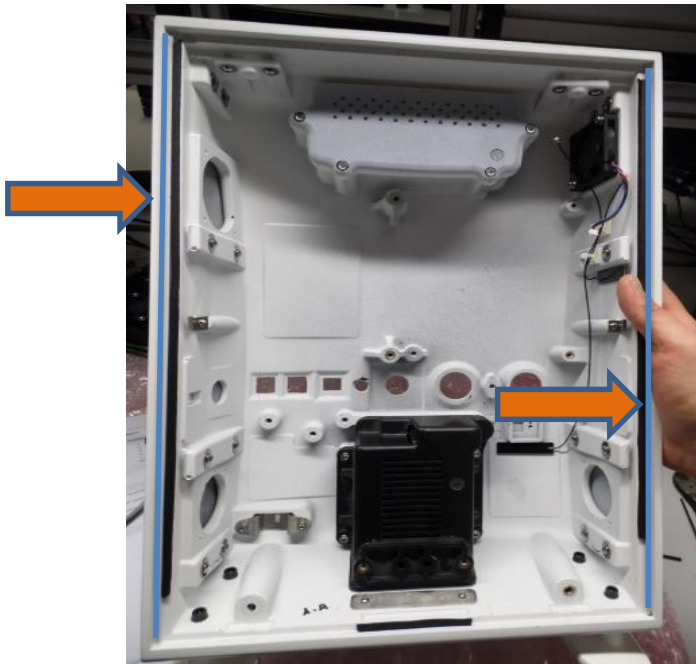


## 1. INSTRUCTION

In order to avoid the upper mentioned phenomenon in case of repair or preventive maintenance one should have the 3 following actions:

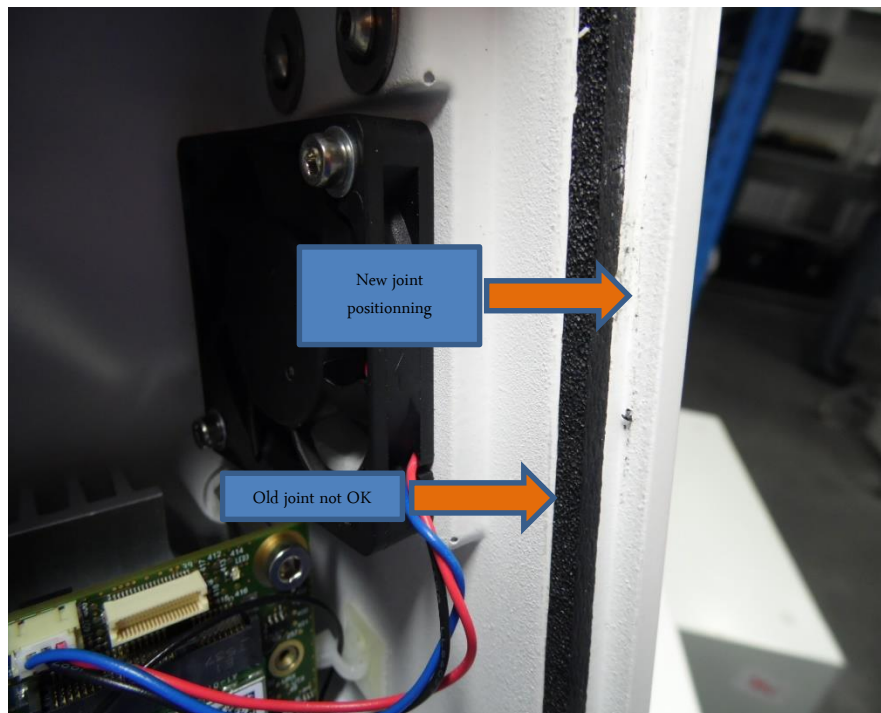
- I. Add a 1mm large EPDM (429mm length) joint on the vertical (blue lines of Image 3)

IMAGE 3



Note that this joint should not be fitted in place of the old joint (that should be removed) but on the other slot (see image 4)

IMAGE 4



- II. Add an M5 1mm washer on top of the frame threading (see Image 5) with glue (cyanoacrylate)

IMAGE 5



- III. Unscrew both cleats (see Image 7) and pull them toward the operator as much as possible then refasten 4 screws afterward.

*Image 6*

