

Table of contents

1. GENERAL INFORMATION	2
2. IN WHICH CASE YOU NEED TO USE THIS PROCEDURE.....	2
3. ACRONYM	3
4. TOOLS NEEDED.....	3
5. LIST OF DEVICES IMPACTED	4
6. INSTRUCTIONS	4

Internal use only

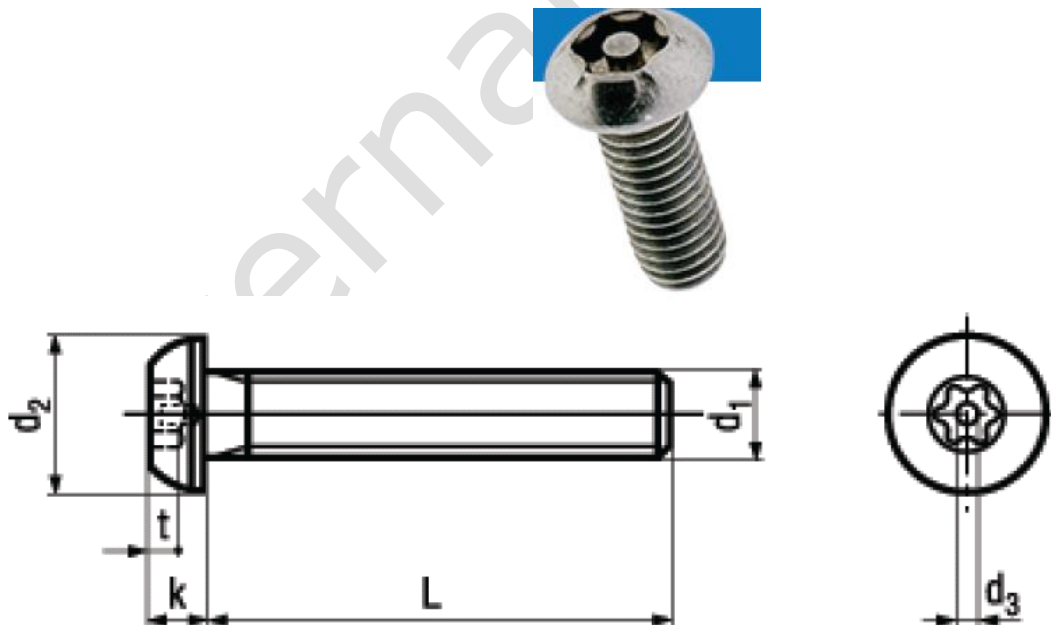
1. GENERAL INFORMATION

Please note that only trained and ECHOSSENS certified service engineers are authorized to open and troubleshoot FibroScan as taught in this document.

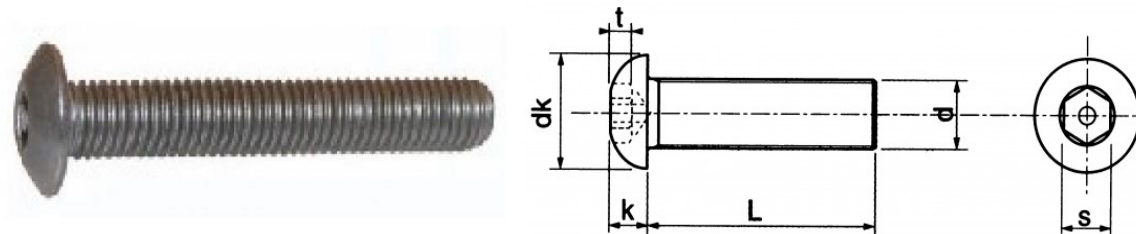
2. IN WHICH CASE YOU NEED TO USE THIS PROCEDURE

It has appeared that the type of screws used to secure the FS 430M back cover were not ageing properly and might get deteriorated if unscrewed with the wrong tool, ECHOSSENS recommend the change of those on any service call. Each ECHOSSENS service partner will locally receive a calibrated torque screwdriver and the needed number of correct screws.

Correct screws BOSSARD ref BN33021 M5*20



Incorrect screws BAFA ref 7380IT05020



3. ACRONYM

The following abbreviations are used in the document:

- ✓ FS430M stands for FibroScan 430 Mini.

4. TOOLS NEEDED

- ✓ GEDORE PRO N.m 05-4.5 screwdriver to assemble the new screws **tightening torque configured at 1N.m**
- ✓ Wera Torx T25 bit ref 675350 TX25 to assemble the new screws.
- ✓ Facom 63 mm Bit Driver Screwdriver, Hexagon 10 mm Tip, Bi-material to remove the old screws.
- ✓ Bit CRV3 from 8 pieces Alloy Steel Security Bit Driver Set, Security Hexagon Bit Set to remove the old screws.
- ✓ BOSSARD screws ref BN33021 M5*20.

Please note that GEDORE PRO calibrated screwdriver should be used on every rear cover disassembly and has to be checked metrologically on a yearly basis.

5. LIST OF DEVICES IMPACTED

Serial Number	F90080	F90130	F90180
F90031	F90081	F90131	F90181
F90032	F90082	F90132	F90182
F90033	F90083	F90133	F90183
F90034	F90084	F90134	F90184
F90035	F90085	F90135	F90185
F90036	F90086	F90136	F90186
F90037	F90087	F90137	F90187
F90038	F90088	F90138	F90188
F90039	F90089	F90139	F90189
F90040	F90090	F90140	F90190
F90041	F90091	F90141	F90191
F90042	F90092	F90142	F90192
F90043	F90093	F90143	F90193
F90044	F90094	F90144	F90194
F90045	F90095	F90145	F90195
F90046	F90096	F90146	F90196
F90047	F90097	F90147	F90197
F90048	F90098	F90148	F90198
F90049	F90099	F90149	F90199
F90050	F90100	F90150	F90200
F90051	F90101	F90151	F90201
F90052	F90102	F90152	F90202
F90053	F90103	F90153	F90203
F90054	F90104	F90154	F90204
F90055	F90105	F90155	F90205
F90056	F90106	F90156	F90206
F90057	F90107	F90157	F90207
F90058	F90108	F90158	F90208
F90059	F90109	F90159	F90209
F90060	F90110	F90160	F90210
F90061	F90111	F90161	F90211
F90062	F90112	F90162	F90212
F90063	F90113	F90163	F90213
F90064	F90114	F90164	F90214
F90065	F90115	F90165	F90215
F90066	F90116	F90166	F90216
F90067	F90117	F90167	F90217
F90068	F90118	F90168	F90218
F90069	F90119	F90169	F90219
F90070	F90120	F90170	F90220
F90071	F90121	F90171	
F90072	F90122	F90172	
F90073	F90123	F90173	
F90074	F90124	F90174	
F90075	F90125	F90175	
F90076	F90126	F90176	
F90077	F90127	F90177	
F90078	F90128	F90178	
F90079	F90129	F90179	

6. INSTRUCTIONS

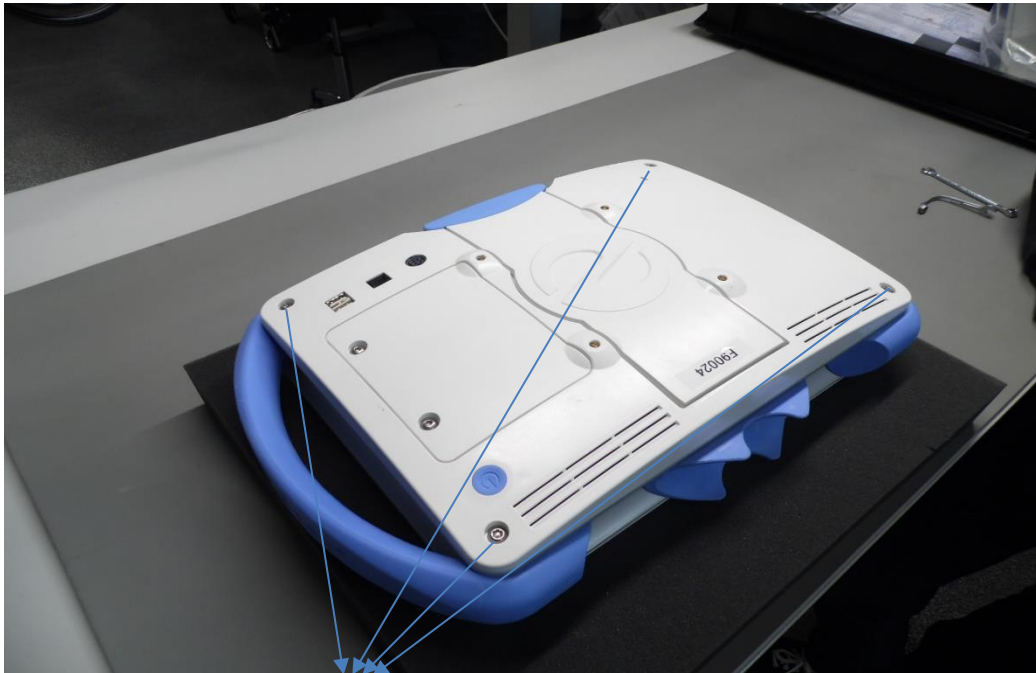


Before any manipulation on the device remove the battery (see chapter 5.7 of E330M001.1_Guide430 for details) and make sure main outlet is disconnected.



The LCD screen should always lie on a mellow surface (foam, Manila paper).

Unscrew the rear cover 4 screws.



4 M5*20 screws

Drive the correct screws with the calibrated screwdriver, you will hear a click when the needed force is reached.



Perform a measurement to make sure everything is OK