

TO: ALL HEALTH CARE DISTRIBUTORS – U.S., CANADA & EXPORT

SUBJECT: CONVERSION OF RESPONDER® 4000 INTO RESPONDER® 5000

This Application Note describes the process to convert a Responder 4000 system into a Responder 5000 system. It specifies changes to both system hardware and the configuration software.

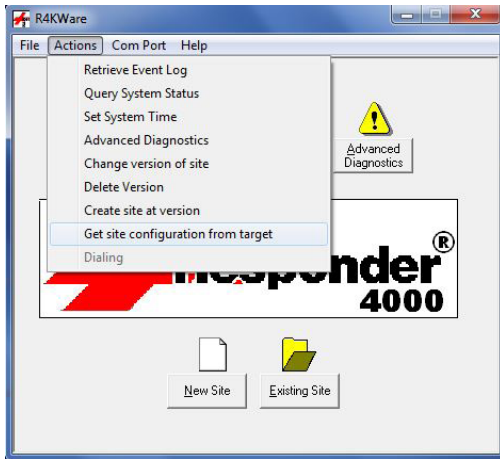
OVERVIEW:

The Responder 5000 platform is fully compatible with all Responder 4000 room stations, corridor lights, and domeless controllers such that a Responder 4000 system can be converted into a Responder 5000 system with no changes to room wiring. As individual room equipment and labour for wiring typically represent a substantial portion of the overall system cost, the ability to re-use installed Responder 4000 room equipment provides a cost-effective method to utilize the new features and capabilities provided by Responder 5000 without the need to re-cable individual rooms. Changes to the headend equipment and a new configuration download to the Responder 5000 will be required. It is not possible to connect a Responder 4000 system to a Responder 5000 system - the Responder 4000 headend must be changed to Responder 5000 headend in order to utilize Responder 5000 features.

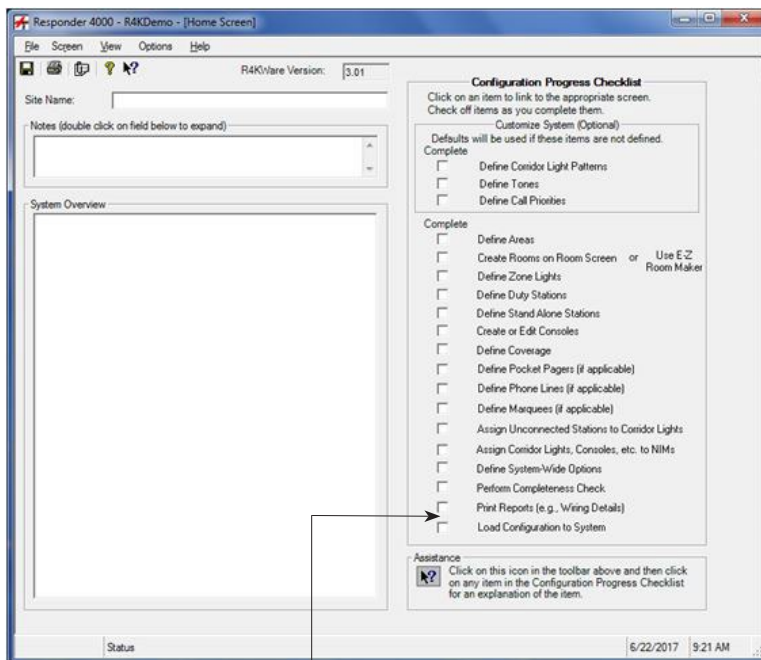
PROCEDURE:

Preparation and Data Collection

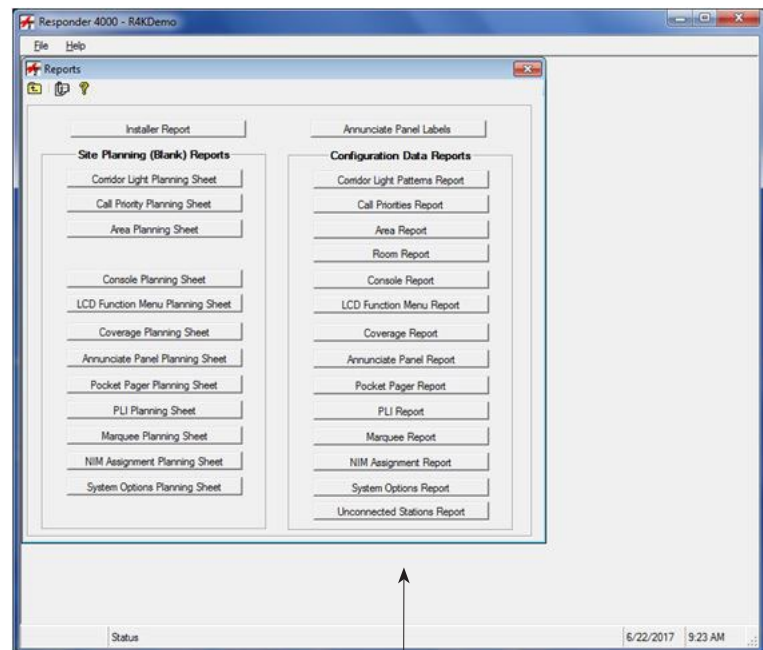
In order to efficiently convert an existing Responder 4000 system into a Responder 5000 system, the current configuration of the Responder 4000 is required. If not previously documented, the Responder 4000 configuration can be obtained directly from the operating Responder 4000 by connecting to the system, then selecting "Actions/Get site configuration from target" from the main menu. Once the configuration is uploaded, the applicable system configuration information can be selected and saved as hardcopies to aid with creating the new configuration for the Responder 5000. From the Home screen, select "Print Reports" , then select the applicable items for the specific site as shown below.



After connecting to the Responder 4000, the configuration can be uploaded from the Actions menu.



Select Print Reports



Select the applicable reports

The Responder 5000 Power Calculation Workbook and Autoquote tools should be consulted to determine the quantity of power supplies, connectors, and other information required to complete the configuration of the Responder 5000 system.

Responder 4000 Conversion Process

If no Responder 5000 equipment will be added to the room, no room wiring changes are required. If a Responder 5000 item is added to the room, a new termination using the 350018 8-Pin SL connector should be used to terminate the cable before connecting the new Responder 5000 device.

Removal of Responder 4000 equipment:

- Remove the R4K4020 Consoles. The R4K4020 console is not used in the Responder 5000 system.
- Remove the R4KNIM, R4KPLI, R4KPIP, R4KSPA, and R4KRSPiP modules as they are not used in the Responder 5000 system.

Addition of Responder 5000 headend equipment:

- Add the proper quantity of R5KMPR36 36-volt power supplies as determined by the power calculation spreadsheet. Verify the proper quantity of R5KMPR15 15-volt power supplies (or re-used R4K-PR400 power supplies) are installed.
- Add the proper quantity of R5KMSC Main System Controller, R5KL2KA L-Net to K-Bus Adaptor modules, R5KM8PRT 8-port switch, and R5KCONS VoIP Nurse Consoles.
- Configure the optional Responder SIP server for SIP phones and the Responder Feature Server for the Application Module if these functions are to be used in the Responder 5000 system.

Responder 5000 Configuration

Using the information obtained from the Responder 4000 configuration, use the Responder 5000 configuration software to enter the Area, Room, and Priorities information. New priorities, tones, corridor light flash rates, etc, can be created as needed. It is not possible to import the Responder 4000 configuration file into the Responder 5000. The system configuration must be manually entered into the Responder 5000 in order to utilize the many new functions provided by the Responder 5000.

Define the Staff/Service Levels, Call Escalation paths, VoIP Nurse Console action buttons, and SIP phone devices. Once these configurations are created, define the coverage for the new system. Language selection is also provided in the Responder 5000 configuration software System Options tab.

The process to convert a Responder 4000 into a Responder 5000 is simple and cost effective when existing room equipment and cabling are re-used. Responder 5000 provides many new functions and capabilities that were not available in the Responder 4000. These new functions provide greatly enhanced capabilities that will improve staff efficiency, patient satisfaction, and the overall operation of the facility.