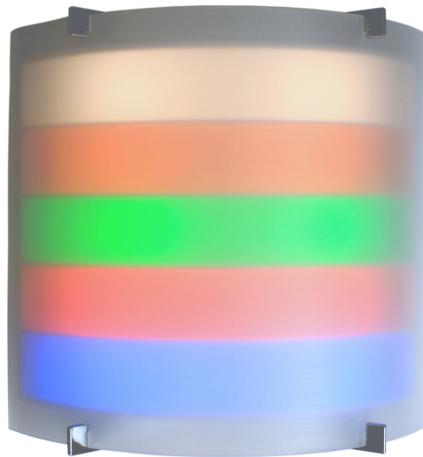


MODEL: R5K CORRIDOR LIGHT 1 AUDIO 6PT



R5KCL516



FEATURES

- Accommodates six (6) station connection points, one (1) may contain audio
- Sconce design provides aesthetic non-institutional look
- Colour LED indication of active calls, service reminders, and staff presence
- Five (5) LED colours with programmable flash rates
- Curved lens provides wide viewing angle
- Serves as control module for room stations
- Status LED indicates corridor light operational status
- Fail-safe operation in event of loss of data communications
- Surface mount for easy installation

SPECIFICATIONS

Power Requirements: 15.5V DC @ 288 mA

Weight: 280 g (9.8 oz)

Size: W: 14.6 cm (5.7")

H: 14.3 cm (5.6")

D: 6.0 cm (2.3")

Lens and Housing: Polycarbonate LEXAN™; polycarbonate ABS.

LEDs: Five (5) - White, Amber, Green, Red, Blue

Controls/Indicators: One (1) status LED

Backbox Requirement: Surface mountable; compatible with European, North American, South American single and dual gang boxes.

Terminations: Plug on connectors, CAT 5 and CAT 6 compatible

Certifications: Designed for compliance to ANSI/UL 1069, IEC 60950, CE, RoHS / WEEE Compliant. Assembled in a U.S. FDA Registered facility.

DESCRIPTION

The R5KCL516 Corridor Light 1 Audio 6Pt provides the connection point for up to six (6) room stations. One (1) of these stations may contain audio. The corridor light sconce design allows for a wide viewing angle with excellent colour distribution and colour distinction. The corridor light can be mounted on the wall or ceiling outside of the patient room. The five LED colours can be programmed for various flash rates to indicate call priority, a pending service requirement, and staff presence.

The corridor light will operate in a default fail-safe mode if communication with the Main System Controller is inter-

rupted. It also contains a status LED visible to service personnel to indicate the device status. The corridor light is surface mounted and the mounting plate accommodates a variety of backboxes. The light is continuously supervised for both power and data. A "Trouble" message will announce at the covering console(s) if the light is removed from the system or becomes non-functional.