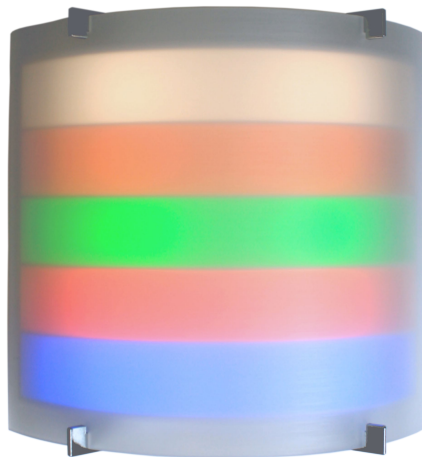


## MODEL: R5K CORRIDOR LIGHT VISUAL 6PT



R5KCL506



### FEATURES

- Accommodates six (6) station connection points for non-audio stations
- Sconce design provides aesthetic non-institutional look
- Colour LED indication of active calls, service reminders, and staff presence
- Five (5) LED colours with programmable flash rates
- Curved lens provides wide viewing angle
- Serves as control module for room stations
- Status LED indicates corridor light operational status
- Fail-safe operation in event of loss of data communications
- Surface mount for easy installation

### SPECIFICATIONS

**Power Requirements:** 15.5V DC @ 245 mA

**Weight:** 260 g (9.1 oz)

**Size: W:** 14.6 cm (5.7")

**H:** 14.3 cm (5.6")

**D:** 6.0 cm (2.3")

**Lens and Housing:** Polycarbonate LEXAN™; polycarbonate ABS.

**LEDs:** Five (5) - White, Amber, Green, Red, Blue

**Controls/Indicators:** One (1) status LED

**Backbox Requirement:** Surface mountable; compatible with European, North American, South American single and dual gang boxes.

**Terminations:** Plug on connectors, CAT 5 and CAT 6 compatible

**Certifications:** Designed for compliance to ANSI/UL 1069, IEC 60950, CE, RoHS / WEEE Compliant. Assembled in a U.S. FDA Registered facility.

### DESCRIPTION

The R5KCL506 Corridor Light Visual 6Pt provides the connection point for up to six (6) non-audio room stations. The corridor light sconce design allows for a wide viewing angle with excellent colour distribution and colour distinction. The corridor light can be mounted on the wall or ceiling outside of the patient room. The five LED colours can be programmed for various flash rates to indicate call priority, a pending service requirement, and staff presence.

The corridor light will operate in a default fail-safe mode if communication with the Main System Controller is inter-

rupted. It also contains a status LED visible to service personnel to indicate the device status. The corridor light is surface mounted and the mounting plate accommodates a variety of backboxes. The light is continuously supervised for both power and data. A "Trouble" message will annunciate at the covering console(s) if the light is removed from the system or becomes non-functional.