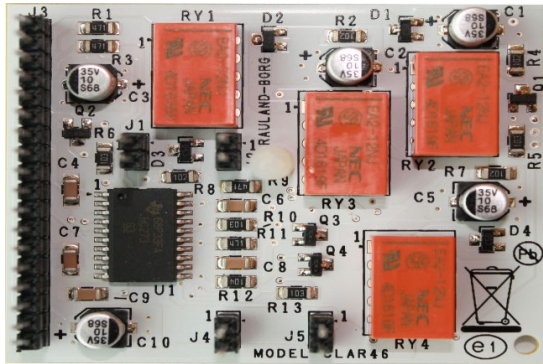


MODEL: R5K 4 Pt AUDIO RELAY KIT



CLAR46



FEATURES

- Provides three (3) additional audio connection points for the CLA246 Audio Corridor Light for a total of four (4) audio points
- Fits into housing of the CLA246 Audio Corridor Light

SPECIFICATIONS

Power Requirements: 15.5V DC @ 32 mA

Weight: 22 g (0.7 oz)

Size: W: 6.04 cm (2.38")

H: 2.13 cm (0.84")

D: 5.08 cm (2.00")

Backbox Requirement: None; mounts in rear of CLA246 Audio Corridor Light.

Terminations: Eighteen (18) pin header; four (4) 2-pin headers.

Certifications: Designed for compliance to ANSI/UL 1069, IEC 60950, CE, RoHS / WEEE Compliant. Assembled in a U.S. FDA Registered facility.

DESCRIPTION

The CLAR46 is a plug-in module for the CLA246 Audio Corridor Light which provides a total of four (4) audio connection points. With the CLAR46, the CLA246 Audio Corridor Light can support six (6) call-in stations, four (4) of which can have audio capability. It fits conveniently inside the CLA246 Audio Corridor Light housing so no additional mounting hardware is required.

Note: The CLAR46 is only compatible with the CLA246 Audio Corridor Light.